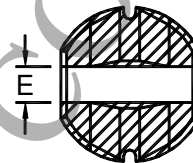
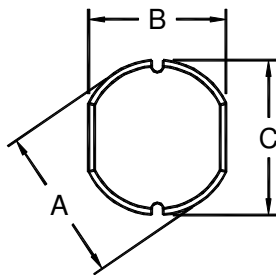


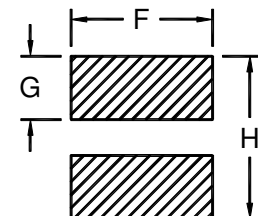


## TL91 Series

- High current capacity
- Low profile and Flat top for SMD
- Low core loss for high frequency power application
- Large terminal surface for good PCB bonding
- Temperature Range: -40°C to +85°C
- Custom-made inductors are available upon request



Bottom View



Suggested  
Soldering Pads

Product Series	Dimension (mm)								Weight (g)
	A	B	C	D	E	F	G	H	
TL91-1	Ø4.5	4.0	4.5	3.2	1.3	4.2	1.8	4.9	0.2
TL91-2	Ø5.8	5.2	5.8	4.5	1.5	5.4	2.4	6.2	0.5
TL91-3	Ø7.8	7.0	7.8	3.5	1.8	7.2	3.2	8.2	0.7
TL91-4	Ø7.8	7.0	7.8	5.0	1.8	7.2	3.2	8.2	1.0
TL91-5	Ø10.0	9.0	10.0	5.4	2.5	9.2	4.0	10.4	1.7
Tolerance	±0.3	±0.3	±0.3	±0.3	±0.3	±0.3	±0.3	±0.3	approx.

Part Number	Inductance (μH)	Test Frequency	DCR (Ω, max.)	Rated Current (A DC)	Part Number	Inductance (μH)	Test Frequency	DCR (Ω, max.)	Rated Current (A DC)
TL91-1-102M	1.0 ± 20%	7.96 MHz	0.048	2.7	TL91-1-103M	10 ± 20%	2.52 MHz	0.182	1.1
TL91-1-152M	1.5 ± 20%	7.96 MHz	0.056	2.6	TL91-1-123M	12 ± 20%	2.52 MHz	0.210	0.97
TL91-1-182M	1.8 ± 20%	7.96 MHz	0.063	2.0	TL91-1-153M	15 ± 20%	2.52 MHz	0.235	0.85
TL91-1-222M	2.2 ± 20%	7.96 MHz	0.071	1.9	TL91-1-183M	18 ± 20%	2.52 MHz	0.338	0.74
TL91-1-272M	2.7 ± 20%	7.96 MHz	0.078	1.8	TL91-1-223M	22 ± 20%	2.52 MHz	0.378	0.68
TL91-1-332M	3.3 ± 20%	7.96 MHz	0.086	1.7	TL91-1-273M	27 ± 20%	2.52 MHz	0.522	0.62
TL91-1-392M	3.9 ± 20%	7.96 MHz	0.093	1.6	TL91-1-333K	33 ± 10%	2.52 MHz	0.540	0.56
TL91-1-472M	4.7 ± 20%	7.96 MHz	0.108	1.5	TL91-1-393K	39 ± 10%	2.52 MHz	0.587	0.52
TL91-1-562M	5.6 ± 20%	7.96 MHz	0.125	1.4	TL91-1-473K	47 ± 10%	2.52 MHz	0.844	0.44
TL91-1-682M	6.8 ± 20%	7.96 MHz	0.131	1.3	TL91-1-563K	56 ± 10%	2.52 MHz	0.937	0.42
TL91-1-822M	8.2 ± 20%	7.96 MHz	0.146	1.2	TL91-1-683K	68 ± 10%	2.52 MHz	1.117	0.37
TL91-2-103M	10 ± 20%	2.52 MHz	0.10	1.5	TL91-2-473K	47 ± 10%	2.52 MHz	0.37	0.72
TL91-2-123M	12 ± 20%	2.52 MHz	0.12	1.4	TL91-2-563K	56 ± 10%	2.52 MHz	0.42	0.68
TL91-2-153M	15 ± 20%	2.52 MHz	0.14	1.3	TL91-2-683K	68 ± 10%	2.52 MHz	0.46	0.61
TL91-2-183M	18 ± 20%	2.52 MHz	0.15	1.2	TL91-2-823K	82 ± 10%	2.52 MHz	0.60	0.58
TL91-2-223M	22 ± 20%	2.52 MHz	0.18	1.1	TL91-2-104K	100 ± 10%	1 kHz	0.70	0.52
TL91-2-273K	27 ± 10%	2.52 MHz	0.20	0.97	TL91-2-124K	120 ± 10%	1 kHz	0.93	0.48
TL91-2-333K	33 ± 10%	2.52 MHz	0.23	0.88	TL91-2-154K	150 ± 10%	1 kHz	1.10	0.40
TL91-2-393K	39 ± 10%	2.52 MHz	0.32	0.80	TL91-2-184K	180 ± 10%	1 kHz	1.38	0.38
TL91-3-103M	10 ± 20%	2.52 MHz	0.08	1.44	TL91-3-683K	68 ± 10%	2.52 MHz	0.33	0.59
TL91-3-123M	12 ± 20%	2.52 MHz	0.09	1.39	TL91-3-823K	82 ± 10%	2.52 MHz	0.41	0.54
TL91-3-153M	15 ± 20%	2.52 MHz	0.10	1.24	TL91-3-104K	100 ± 10%	1 kHz	0.48	0.51
TL91-3-183M	18 ± 20%	2.52 MHz	0.11	1.12	TL91-3-124K	120 ± 10%	1 kHz	0.54	0.49
TL91-3-223M	22 ± 20%	2.52 MHz	0.13	1.07	TL91-3-154K	150 ± 10%	1 kHz	0.75	0.40
TL91-3-273M	27 ± 20%	2.52 MHz	0.15	0.94	TL91-3-184K	180 ± 10%	1 kHz	1.02	0.36
TL91-3-333K	33 ± 10%	2.52 MHz	0.17	0.85	TL91-3-224K	220 ± 10%	1 kHz	1.20	0.31
TL91-3-393K	39 ± 10%	2.52 MHz	0.22	0.74	TL91-3-274K	270 ± 10%	1 kHz	1.31	0.29
TL91-3-473K	47 ± 10%	2.52 MHz	0.25	0.68	TL91-3-334K	330 ± 10%	1 kHz	1.50	0.28
TL91-3-563K	56 ± 10%	2.52 MHz	0.28	0.64	TL91-4-823K	82 ± 10%	2.52 MHz	0.37	0.78
TL91-4-103M	10 ± 20%	2.52 MHz	0.07	2.30	TL91-4-104K	100 ± 10%	1 kHz	0.43	0.72
TL91-4-123M	12 ± 20%	2.52 MHz	0.08	2.00	TL91-4-124K	120 ± 10%	1 kHz	0.47	0.66
TL91-4-153M	15 ± 20%	2.52 MHz	0.09	1.80	TL91-4-144K	140 ± 10%	1 kHz	0.51	0.61
TL91-4-183M	18 ± 20%	2.52 MHz	0.10	1.60	TL91-4-164K	160 ± 10%	1 kHz	0.56	0.57
TL91-4-223M	22 ± 20%	2.52 MHz	0.11	1.50	TL91-4-184K	180 ± 10%	1 kHz	0.71	0.51
TL91-4-273M	27 ± 20%	2.52 MHz	0.12	1.30	TL91-4-224K	220 ± 10%	1 kHz	0.96	0.49
TL91-4-333K	33 ± 10%	2.52 MHz	0.13	1.20	TL91-4-274K	270 ± 10%	1 kHz	1.11	0.42
TL91-4-393K	39 ± 10%	2.52 MHz	0.16	1.10	TL91-4-334K	330 ± 10%	1 kHz	1.26	0.40
TL91-4-473K	47 ± 10%	2.52 MHz	0.18	1.10	TL91-4-394K	390 ± 10%	1 kHz	1.77	0.36
TL91-4-563K	56 ± 10%	2.52 MHz	0.24	0.94	TL91-4-474K	470 ± 10%	1 kHz	1.96	0.34
TL91-4-683K	68 ± 10%	2.52 MHz	0.28	0.85	TL91-5-104K	100 ± 10%	1 kHz	0.35	0.97
TL91-5-103M	10 ± 20%	2.52 MHz	0.06	2.60	TL91-5-124K	120 ± 10%	1 kHz	0.40	0.89
TL91-5-123M	12 ± 20%	2.52 MHz	0.07	2.45	TL91-5-144K	140 ± 10%	1 kHz	0.47	0.78
TL91-5-153M	15 ± 20%	2.52 MHz	0.08	2.27	TL91-5-184K	180 ± 10%	1 kHz	0.63	0.72
TL91-5-183M	18 ± 20%	2.52 MHz	0.09	2.15	TL91-5-224K	220 ± 10%	1 kHz	0.73	0.66
TL91-5-223M	22 ± 20%	2.52 MHz	0.10	1.96	TL91-5-274K	270 ± 10%	1 kHz	0.97	0.57
TL91-5-273M	27 ± 20%	2.52 MHz	0.11	1.76	TL91-5-334K	330 ± 10%	1 kHz	1.15	0.52
TL91-5-333M	33 ± 20%	2.52 MHz	0.12	1.50	TL91-5-394K	390 ± 10%	1 kHz	1.30	0.48
TL91-5-393M	39 ± 20%	2.52 MHz	0.14	1.37	TL91-5-474K	470 ± 10%	1 kHz	1.48	0.42
TL91-5-473K	47 ± 10%	2.52 MHz	0.17	1.28	TL91-5-564K	560 ± 10%	1 kHz	1.90	0.33
TL91-5-563K	56 ± 10%	2.52 MHz	0.19	1.17	TL91-5-684K	680 ± 10%	1 kHz	2.25	0.28
TL91-5-683K	68 ± 10%	2.52 MHz	0.22	1.11	TL91-5-824K	820 ± 10%	1 kHz	2.55	0.24
TL91-5-823K	82 ± 10%	2.52 MHz	0.25	1.00					